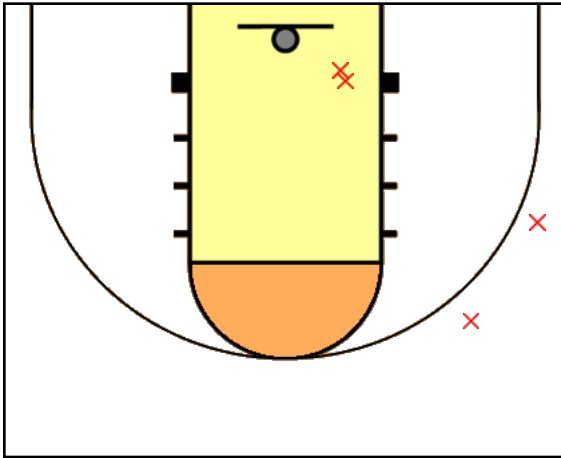


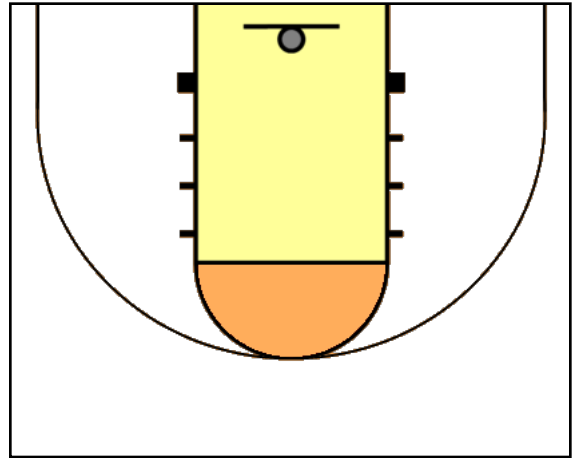
NWA vs. Elev8, 10/6/19: Visitors - NWA

#0 Randy Lucien Pts: 0 Asst: 4
 2FG: (0-2) 0% 3FG: (0-2) 0% FT: (0-0) 0%



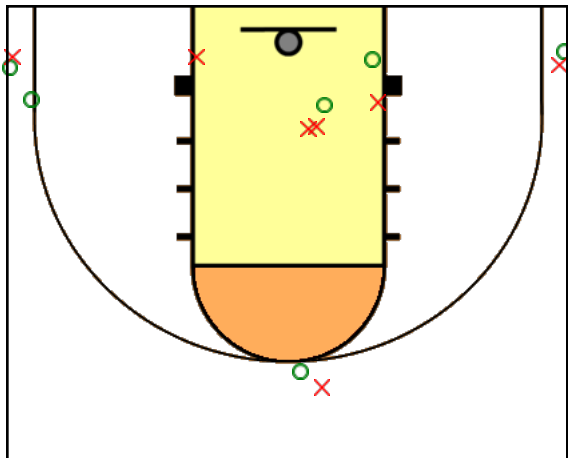
OR:0 DR:2 Stl:3 Foul:3 Blk:0 TO:0

#1 Raffell Jones Pts: 0 Asst: 0
 2FG: (0-0) 0% 3FG: (0-0) 0% FT: (0-0) 0%



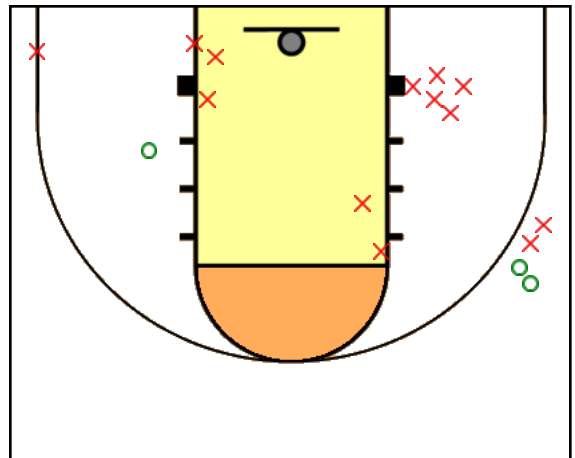
OR:0 DR:0 Stl:0 Foul:0 Blk:0 TO:0

#3 Marquette Smith Pts: 20
 2FG: (2-6) 33% 3FG: (4-7) 57% FT: (4-4)



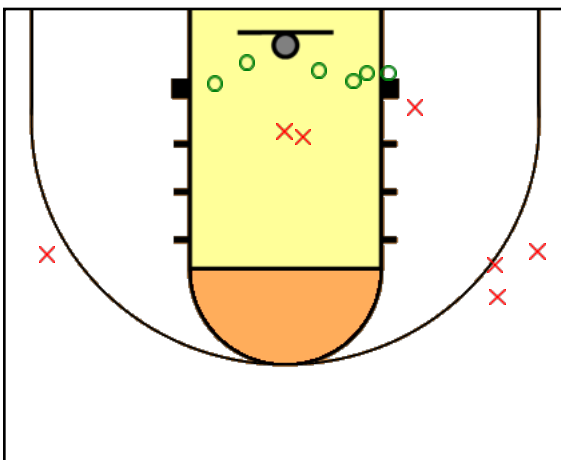
OR:4 DR:4 Stl:6 Foul:2 Blk:0 TO:2

#12 Frank Parker Pts: 8 Asst: 1
 2FG: (1-11) 9% 3FG: (2-5) 40% FT: (0-0) 0%



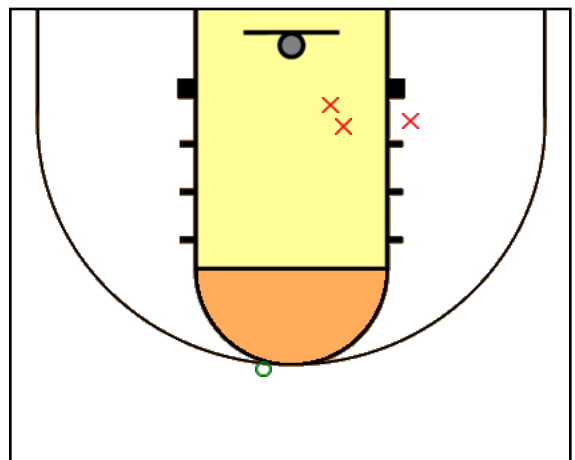
OR:4 DR:3 Stl:1 Foul:2 Blk:1 TO:0

#15 Mark Clements Pts: 17
 2FG: (6-9) 67% 3FG: (0-4) 0% FT: (5-8)



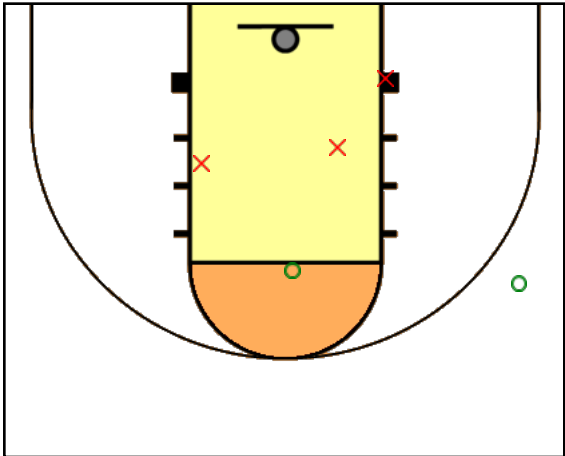
OR:6 DR:2 Stl:1 Foul:3 Blk:0 TO:2

#24 Omar Daniels Pts: 3 Asst: 1
 2FG: (0-3) 0% 3FG: (1-1) 100% FT: (0-0) 0%



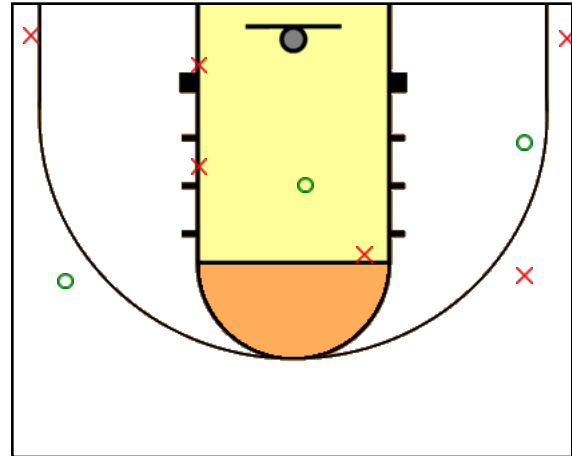
OR:2 DR:1 Stl:0 Foul:3 Blk:0 TO:3

#32 Andre Almeida Pts: 6 Asst:
2FG: (1-4) 25% 3FG: (1-1) 100% FT: (1-2)



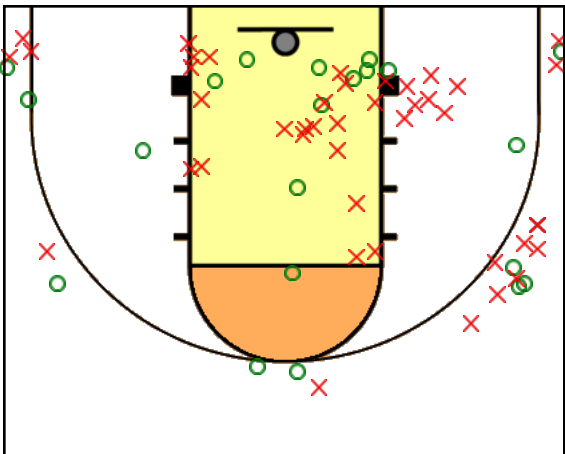
OR:1 DR:1 Stl:1 Foul:1 Blk:0 TO:3

#44 Altie Parker Pts: 8 Asst: 1
2FG: (2-5) 40% 3FG: (1-4) 25% FT: (1-2)



OR:0 DR:2 Stl:1 Foul:1 Blk:0 TO:1

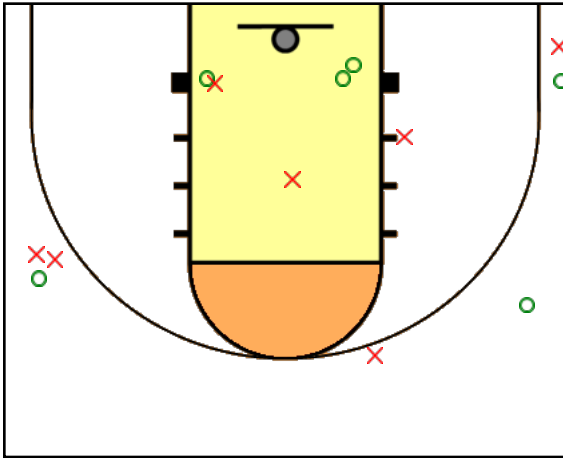
NWA Pts: 62 Asst: 13
2FG: (12-40) 30% 3FG: (9-24) 38% FT:



OR:17 DR:15 Stl:13 Foul:15 Blk:1 TO:11

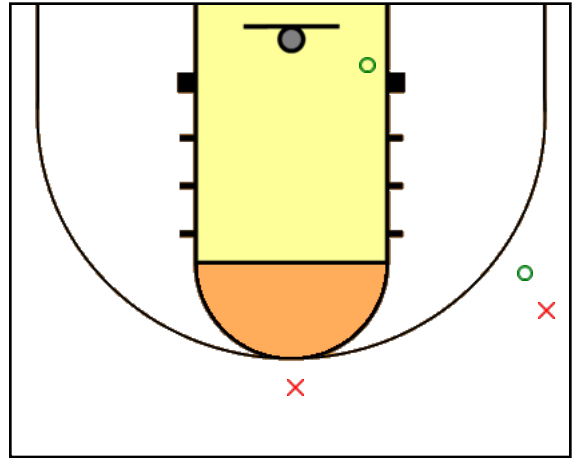
NWA vs. Elev8, 10/6/19: Home - Elev8

#5 Jeremi Morales Pts: 18 Asst:
 2FG: (3-6) 50% 3FG: (3-7) 43% FT: (3-5)



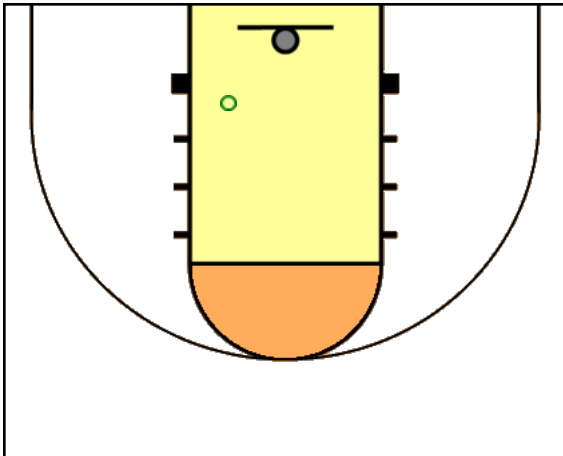
OR:0 DR:1 Stl:1 Foul:1 Blk:0 TO:3

#6 Greg Charkey Pts: 12 Asst:
 2FG: (1-1) 100% 3FG: (1-3) 33% FT: (7-7)



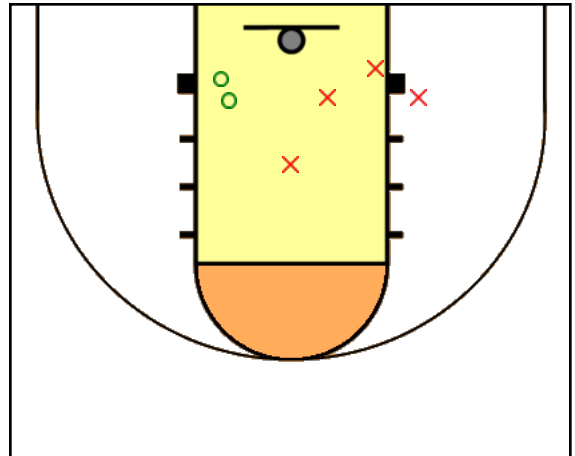
OR:0 DR:3 Stl:1 Foul:3 Blk:0 TO:5

#10 Adrian Iriate Pts: 2 Asst: 0
 2FG: (1-1) 100% 3FG: (0-0) 0% FT: (0-0) 0%



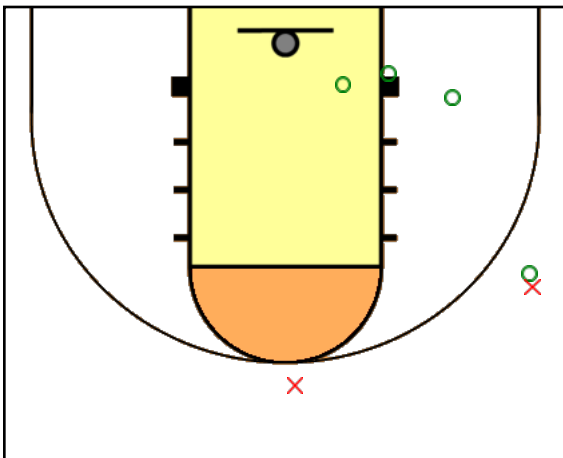
OR:2 DR:0 Stl:2 Foul:1 Blk:0 TO:5

#15 Nijal Collins Pts: 5 Asst: 0
 2FG: (2-6) 33% 3FG: (0-0) 0% FT: (1-2)



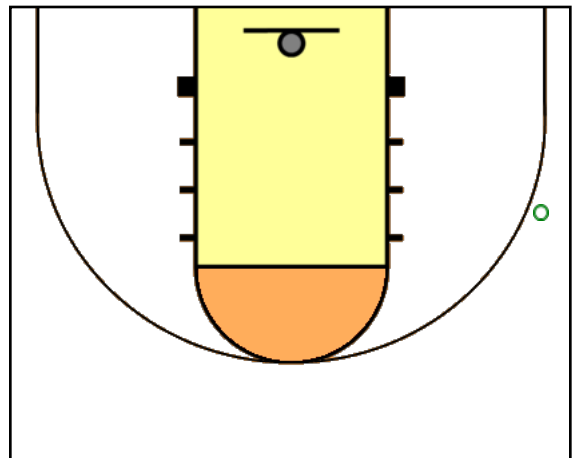
OR:1 DR:8 Stl:1 Foul:3 Blk:1 TO:1

#16 Luke Stamm Pts: 10 Asst: 1
 2FG: (3-3) 100% 3FG: (1-3) 33% FT: (1-2)



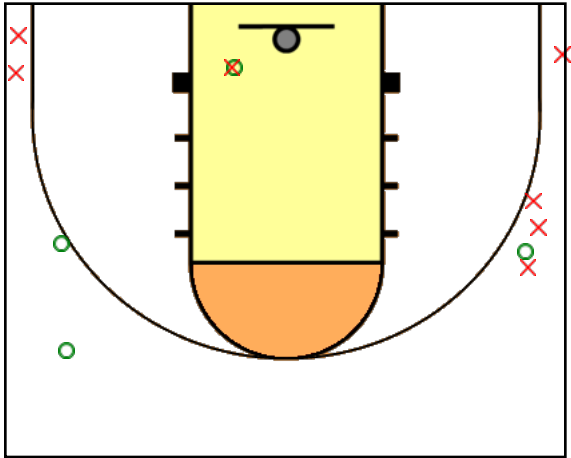
OR:1 DR:4 Stl:0 Foul:2 Blk:2 TO:0

#24 Edgar Reyes Pts: 4 Asst: 0
 2FG: (0-0) 0% 3FG: (1-1) 100% FT: (1-2)



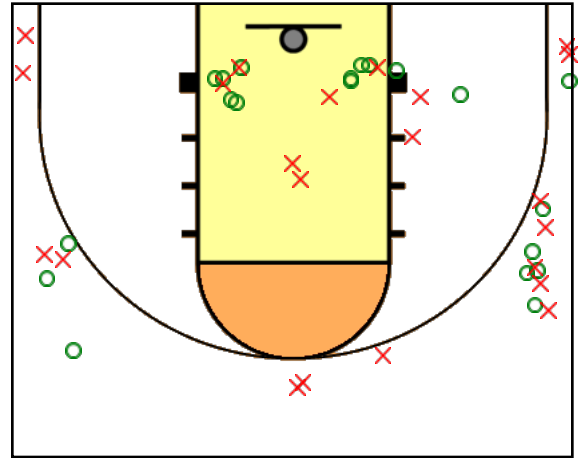
OR:0 DR:1 Stl:1 Foul:3 Blk:0 TO:1

#32 Larry Jordan Pts: 13 Asst:
2FG: (1-2) 50% 3FG: (3-9) 33% FT: (2-3)



OR:1 DR:4 Stl:3 Foul:1 Blk:1 TO:2

Elev8 Pts: 64 Asst: 9
2FG: (11-19) 58% 3FG: (9-23) 39% FT:



OR:5 DR:21 Stl:9 Foul:14 Blk:4 TO:17